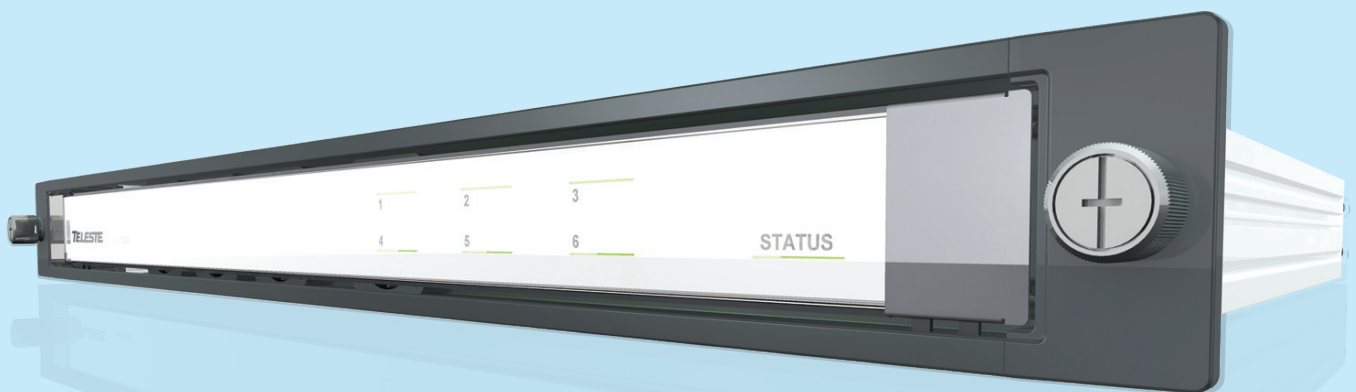


## Fully scalable Headend platform for Cable TV and IPTV networks

Luminato is a high density modular platform for IPTV and cable TV headends with advanced real time stream processing.



The Luminato platform is the most compact form factor in the industry with minimal power consumption. The chassis have been divided into six processing modules. All modules can be hot swapped and auto configured, minimising service outage. The module slots can be equipped with ASI to IP, DVB receivers and QAM output depending on the application requirements.

The two Gigabit Ethernet interfaces with electrical or optical SFP modules are provided for IP payload traffic. MPEG-2 and MPEG-4 with SD and HD are supported, suitable for IP centric Cable TV and IPTV networks.

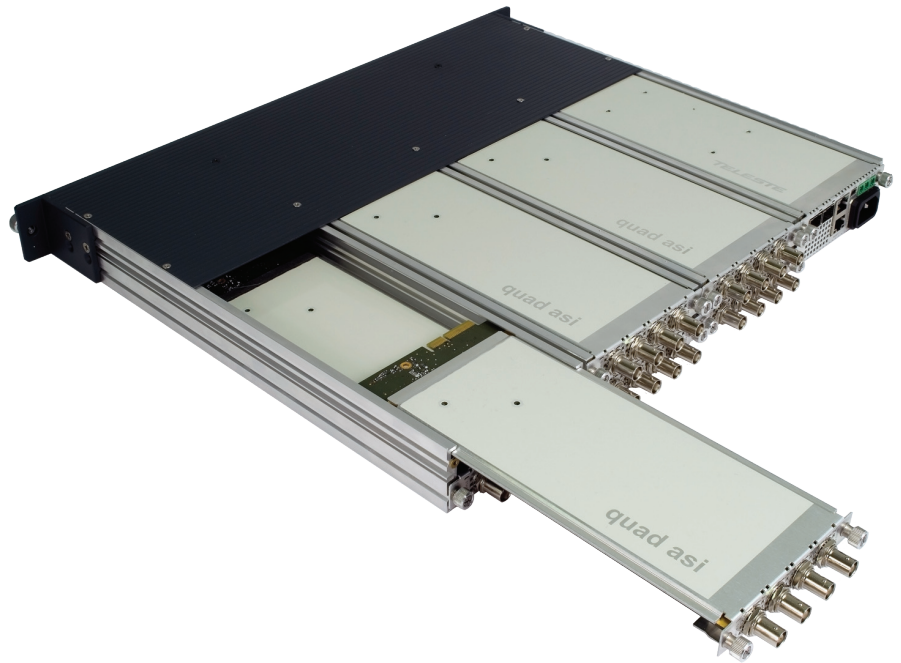
Management of the platform is via a web user interface, providing local or remote access. The advanced DVB stream processing, UDP/IP and RTP/IP

streaming and MPTS pass through offers a very flexible environment for service management.

24/7 support is available for Luminato and pre-configured platforms can be provided.

## Luminato business benefits

- Fully modular platform that grows with your business, from a compact 1 RU "headend in a box" to a multi-site, distributed headend solution
- Platform's small footprint enables efficient space usage
- Low power consumption enables longer module lifetime and lower energy costs. Energy efficiency also reduces site cooling requirements
- Internal switch for cable free interconnections and simplified maintenance
- Advanced DVB stream processing offers flexibility for channel creation and simplicity in multi-vendor environments
- The ability to customise content delivery to targeted subscriber groups



## Technical specifications

Chassis		ASI input module	
Mounting	19" rack mountable, 1RU Installation rails for easy installation	Input	Four ASI
Dimension (H x W x D)	1U x 19" x 407 mm	Connectors	BNC 75 ohms
Operating voltage	100-240 VAC 50/60 Hz	Advanced DVB processing	Service filtering, service component filtering, Service Id followup, PID remapping, filtering, demuxing to SPTS and MPTS pass through
Power consumption	max. 100 W / fully occupied chassis	Protocols	Unicast or multicast IP streaming, DVB over UDP or RTP
Operating Temperature	0...50 °C ambient	PSI/SI processing	Pass through and regeneration
Relative Humidity	up to 90% (non-condensing)		
Cooling	replaceable fans		
Management interfaces		Receiver modules	
Two 10/100 BaseTX	for CAS and NMS	Input	DVB-T or DVB-S2
USB	for initial setup	Descrambling	Two CI slots for descrambling CAM modules
Stream interfaces		Advanced DVB processing	Service filtering, service component filtering, Service Id followup, PID remapping, filtering, demuxing to SPTS and MPTS pass through
Two gigabit Ethernet ports	Supports electrical and optical SFP modules	Protocols	Unicast or multicast IP streaming, DVB over UDP or RTP
Management and monitoring		PSI/SI processing	Pass through and regeneration
Web user interface			
CLI			
SSH			
SNMP			
Interface Modules			
6 slots for hot swappable processing modules		<b>Note! More processing modules for the Luminato platform are under development.</b>	